

REMOTE SEAL TYPE PRESSURE TRANSMITTER <SANITARY TYPE>

DATA SHEET

FKB...4

The FCX-AII pressure transmitter accurately measures gauge pressure and transmits a proportional 4 to 20mA signal. The transmitter utilizes a unique micromachined capacitance silicon sensor with state-of-the-art microprocessor technology to provide exceptional performance and functionality.

Totally welded construction of the seals assures excellent reliability in high temperature and highly corrosive process conditions.

FEATURES

1. High accuracy

0.2% accuracy for all calibrated spans is a standard feature for all GP models covering 1.3kPa {0.013bar} range to 5000kPa {500bar} high pressure range. 0.1% accuracy is available as option. Fuji's micro-capacitance silicon sensor assures this accuracy for all elevated or suppressed calibration ranges without additional adjustment.

2. Minimum environmental influence

The "Advanced Floating Cell" design which protects the pressure sensor against changes in temperature, and overpressure substantially reduces total measurement error in actual field applications.

3. Fuji/HART® bilingual communications protocol and FOUNDATION™ fieldbus and Profibus™ compatibility

FCX-AII series transmitter offers bilingual communications to speak both Fuji proprietary protocol and HART®. Any HART® compatible devices can communicate with FCX-AII. Further, by upgrading electronics FOUNDATION™ fieldbus and Profibus™ are also available.

4. Application flexibility

Various options that render the FCX-AII suitable for almost any process applications include:

- Analog indicator at either the electronics side or terminal side
- Full range of hazardous area approvals
- Built-in RFI filter and lightning arrester
- 5-digit LCD meter with engineering unit
- Stainless steel electronics housing
- Wide selection of materials
- High temperature, high vacuum seals

5. Burnout current flexibility (Under Scale: 3.2 to 3.8mA, Over Scale: 20.8 to 21.6mA)

Burnout signal level is adjustable using Model FXW Hand Held Communicator (HHC) to comply with NAMUR NE43.

6. Dry calibration without reference pressure

Thanks to the best combination of unique construction of mechanical parts (Sensor unit) and high performance electronics circuit (Electronics unit), reliability of dry calibration without reference pressure is at equal level as wet calibration.



SPECIFICATIONS

Functional specifications

Service: Liquid, gas, or vapour

Span, range, and overrange limit:

Type	Span limit [kPa]{bar}		Range limit [kPa]{bar}	Overrange limit [MPa] {bar}
	Min.	Max.		
FKB□□1	1.3 {0.013}	130 {1.3}	-130 to +130 {-1.3 to +1.3}	1 {10}
FKB□□2	5 {0.05}	500 {5}	-100 to +500 {-1 to +5}	1.5 {15}
FKB□□3	30 {0.3}	3000 {30}	-100 to +3000 {-1 to +30}	4.5 {45}

Remark: To minimize environmental influence, span should be greater than 1/40 of the max. span in most applications.

- Lower range limit (vacuum limit) ;
Silicone fill sensor: See Fig. 1
- Conversion factors to different units;
1MPa=10³kPa=10bar=10.19716kgf/cm²=145.0377psi
1kPa=10mbar=101.9716mmH₂O=4.01463inH₂O

Output signal: 4 to 20mA DC with digital signal superimposed on the 4 to 20mA signal.

Power supply: Transmitter operates on 10.5V to 45V DC at transmitter terminals.
10.5V to 32V DC for the units with optional arrester.

Load limitations: see figure below



Note: For communication with HHC⁽¹⁾ (Model: FXW), min. of 250Ω is required.

Zero/span adjustment:

Zero and span are adjustable from the HHC⁽¹⁾. Zero and span are also adjustable externally from the adjustment screw (Span adjustment is not available with 9th digit code "L, P, Q, S").

Damping:

Adjustable from HHC or local adjustment unit with LCD display. The time constant is adjustable between 0.12 to 32 seconds.

Zero elevation/suppression:

Zero can be elevated or suppressed within the specified range limit of each sensor model.

Normal/reverse action:

Selectable from HHC⁽¹⁾.

Indication:

Analog indicator or 5-digit LCD meter, as specified.

Burnout direction: Selectable from HHC⁽¹⁾

If self-diagnostic detect transmitter failure, the analog signal will be driven to either "Output Hold", "Output Overscale" or "Output Underscale" modes.

"Output Hold":

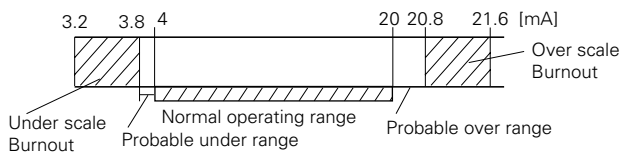
Output signal is hold as the value just before failure happens.

"Output Overscale":

Adjustable within the range 20.8mA to 21.6mA from HHC⁽¹⁾

"Output Underscale":

Adjustable within the range 3.2mA to 3.8mA from HHC⁽¹⁾



Loop-check output:

Transmitter can be configured to provide constant signal 3.8mA through 21.6mA by HHC⁽¹⁾.

Temperature limit:

Ambient: -40 to +85°C
 (-20 to +80°C for LCD indicator)
 (-40 to +60°C for arrester option)

For explosionproof units (flameproof or intrinsic safety), ambient temperature must be within the limits specified by each standard.

Process:

Fill fluid	Code in the 13th digit of "Code symbols"	Process temperature	Lower limit of static press.
Silicone oil	G	-40 to 120°C	2.7kPa abs (20mmHg abs)

Storage: -40 to +90°C

Humidity limit: 0 to 100% RH

Communication: With HHC⁽¹⁾ (Model FXW, consult Data Sheet No. EDS8-47), following information can be remotely displayed or reconfigured.

Note: HHC's version must be more than 6.0 (or FXW □□□□1-□3), for FCX-A II.

Items	Display	Set
Tag No.	✓	✓
Model No.	✓	✓
Serial No.	✓	—
Engineering unit	✓	✓
Range limit	✓	—
Measuring range	✓	✓
Damping	✓	✓
Output mode	✓	—
Burnout direction	✓	✓
Calibration	✓	✓
Output adjust	—	✓
Data	✓	—
Self diagnoses	✓	—
Printer	—	—
External switch lock	✓	✓
Transmitter display	✓	✓
Linearize	✓	✓
Rerange	✓	✓

EMC Conformity: EN61326 CE

(Note) (1) HHC: Hand Held Communicator

Performance specifications

Reference conditions, silicone oil fill, 316SS isolating diaphragms, 4 to 20mA analog output in linear mode and capillary length of 1.5m.

Accuracy rating: (including linearity, hysteresis, and repeatability)

(Standard)

For spans greater than 1/10 of URL: $\pm 0.2\%$ of span

For spans below 1/10 of URL:

$$\pm \left(0.1 + 0.1 \frac{0.1 \times \text{URL}}{\text{Span}} \right) \% \text{ of span}$$

(Option) (Code; 21th digit H,K)

For spans greater than 1/10 of URL: $\pm 0.1\%$ of span

For spans below 1/10 of URL:

$$\pm \left(0.05 + 0.05 \frac{0.1 \times \text{URL}}{\text{Span}} \right) \% \text{ of span}$$

Stability: $\pm 0.2\%$ of upper range limit (URL) for 3 years.

Temperature effect:

Effect per 28°C change between the limits of -40°C and $+85^\circ\text{C}$

(Standard) Zero shift: $\pm 0.35\%$ of URL

Total effect: $\pm 0.5\%$ of URL

(Option) (Code; 21th digit J,K)

Zero shift: $\pm 0.3\%$ of URL

Total effect: $\pm 0.4\%$ of URL

Overrange effect: Zero shift; 0.2% of URL for any overrange to maximum limit

Supply voltage effect:

Less than 0.005% of calibrated span per 1V

RFI effect: Less than 0.2% of URL for the frequencies of 20 to 1000MHz and field strength 30 V/m when electronics covers on.
(Classification: 2-abc: 0.2% span per SAMA PMC 33.1)

Step response: Time constant: 0.3s *)

Dead time: 0.2s *)

(without electrical damping)

*) Faster response is available as option (maximum update rate: 25 times per second).

Dielectric strength:

500V AC, 50/60Hz 1 min., between circuit and earth.

Insulation resistance:

More than 100M Ω /500V DC.

Turn-on time: 4 sec.

Internal resistance for external field indicator:

12 Ω or less

Physical specifications

Electrical connections:

G1/2, 1/2-14 NPT, Pg13.5, or M20 \times 1.5 conduit, as specified.

1-port (standard) or 2-port with each conduit, as specified.

Process connections:

IDF standard 4" clamp

(In case of 6th digit code "1", "2")

IDF standard 2" clamp

(In case of 6th digit code "3")

Refer to "Code symbols."

Process-wetted parts material:

Diaphragm: 316L stainless steel

Flange face: 316 stainless steel

(Refer to "Code symbols")

Non-wetted parts material:

Electronics housing: Low copper die-cast aluminum alloy finished with epoxy/polyurethane double coating (standard) or 316 stainless steel (SCS14 per JIS G5121), as specified.

Capillary: In case of 11th code "D, E, L, F, M, N, P", PVC armored stainless steel.

In case of 11th code "Q, R, S, T, V, W, X", stainless steel armored stainless steel.

Mounting flange: 316 stainless steel

Fill fluid: Silicone oil (standard)

Mounting bracket: 304 stainless steel.

Environmental protection:

IEC IP67 and NEMA 6/6P

Mounting: On 60.5mm (JIS 50A) pipe using mounting bracket, direct wall mounting

Mass {weight}: Transmitter approximately 10kg without options.

Add; 0.5kg for mounting bracket

0.8kg for indicator option

4.5kg for stainless steel housing option

Optional features

- Indicator:** A plug-in analog indicator (2.5% accuracy) can be housed in the electronics compartment or in the terminal box of the housing.
An optional 5-digit LCD meter with engineering unit is also available.
- Local adjustment unit with LCD display:** An optional 5-digit LCD meter with Zero/ Span adjustment function, loop-check function and damping adjustment function, is available.
- Arrester:** A built-in arrester protects the electronics from lightning surges.
Lightning surge immunity: 4kV (1.2 × 50μs)
- Degreasing:** Process-wetted parts are cleaned, but the fill fluid is standard silicone oil. Not for use on oxygen or chlorine measurement.
- Optional tag plate:** An extra stainless steel tag for customer tag data is wired to the transmitter.
- Coating of cell:** Cell's surface is finished with epoxy/polyurethane double coating. Specify if environment is extremely corrosive.

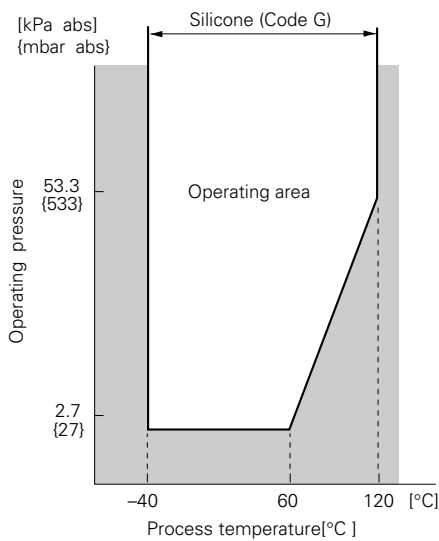


Fig. 1 Relation between process temperature and operating pressure

ACCESSORIES

- Hand-held communicator:** (Model FXW, refer to Data Sheet No. EDS8-47)
- Z/S board:** Parts No.=ZZPFCX4-A070
When Z/S board is mounted on the FCX-AII amplifier unit, external adjustment screw will be available for zero and span adjustment.

The product conforms to the requirements of the Electromagnetic compatibility Directive 94/9/EC as detailed within the technical construction file number TNS13035. The applicable standards used to demonstrate compliance are :

EMI (Emission) EN61326 : 1997
Class A (standard for Industrial Location)

Frequency range MHz	Limits	Reference standard
30 to 230	40dB (μV/m) quasi peak, measured at 10m distance	CISPR16-1 and CISPR16-2
230 to 1000	47dB (μV/m) quasi peak, measured at 10m distance	

EMI (Immunity) EN61326: 1997
Annex A (standard for Industrial Location)

Phenomenon	Test value	Basic standard	Performance criteria
Electrostatic discharge	4kV (Contact) 8kV (Air)	EN61000-4-2	B
Electromagnetic field	80 to 1000MHz 10V/m 80%AM (1kHz)	EN61000-4-3	A
Rated power frequency magnetic field	30A/m 50Hz	EN61000-4-8	A
Burst	2kV 5kHz	EN61000-4-4	B
Surge	1.2μs/50μs 1kV (Line to line) 2kV (Line to ground)	EN61000-4-5	B
Conducted RF	0.15 to 80MHz 3V 80%AM (1kHz)	EN61000-4-6	A

Note) Definition of performance criteria

A: During testing, normal performance within the specification limits.

B: During testing, temporary degradation, or loss of function or performance which is self-recovering.

CODE SYMBOLS

Digit	Description	Note	1	2	3	4	5	6	7	8	9	10	11	12	13	14	15	21	Digit No. of code																																													
			F	K	B	0		4								Y	Y																																															
4	<Conduit connection> G 1/2 (×1) 1/2-14NPT (×1) Pg13.5 (×1) M20 × 1.5 (×1) ----- G 1/2 (×2) 1/2-14NPT (×2) Pg13.5 (×2) M20 × 1.5 (×2)	Combination with 12th digit code "C, E, P, Q" are not available.																																																														
5	<Flanges> <table border="1"> <thead> <tr> <th>Mounting flange</th> <th>Flange size and rating</th> <th>Ranges</th> </tr> <tr> <td></td> <td></td> <td>1 2 3</td> </tr> </thead> <tbody> <tr> <td>316 stainless steel</td> <td>IDF standard 4" clamp</td> <td>* *</td> </tr> <tr> <td></td> <td>IDF standard 2" clamp</td> <td>*</td> </tr> </tbody> </table>	Mounting flange	Flange size and rating	Ranges			1 2 3	316 stainless steel	IDF standard 4" clamp	* *		IDF standard 2" clamp	*																																																			
Mounting flange	Flange size and rating	Ranges																																																														
		1 2 3																																																														
316 stainless steel	IDF standard 4" clamp	* *																																																														
	IDF standard 2" clamp	*																																																														
6	 1.3.....130 {0.013...1.3} ----- 5.....500 {0.05.....5} ----- 30.....3000 {0.3.....30}	Note 1							1																																																							
7	<Material/diaphragm extension> <table border="1"> <thead> <tr> <th>Diaphragm</th> <th>Flange face</th> <th>Diaph. extension [mm]</th> </tr> </thead> <tbody> <tr> <td>316L stainless steel</td> <td>316 stainless steel</td> <td>0</td> </tr> </tbody> </table>	Diaphragm	Flange face	Diaph. extension [mm]	316L stainless steel	316 stainless steel	0																																																									
Diaphragm	Flange face	Diaph. extension [mm]																																																														
316L stainless steel	316 stainless steel	0																																																														
9	<Indicator and arrester> <table border="1"> <thead> <tr> <th>Indicator</th> <th>Arrester</th> </tr> </thead> <tbody> <tr> <td>None</td> <td>None</td> </tr> <tr> <td>Analog, 0 to 100% linear scale</td> <td>None</td> </tr> <tr> <td>Analog, custom scale</td> <td>None</td> </tr> <tr> <td>None</td> <td>Yes</td> </tr> <tr> <td>Analog, 0 to 100% linear scale</td> <td>Yes</td> </tr> <tr> <td>Analog, custom scale</td> <td>Yes</td> </tr> <tr> <td>Digital, 0 to 100%</td> <td>None</td> </tr> <tr> <td>Digital, custom scale</td> <td>None</td> </tr> <tr> <td>Digital, 0 to 100%</td> <td>Yes</td> </tr> <tr> <td>Digital, custom scale</td> <td>Yes</td> </tr> <tr> <td>Digital, 0 to 100% (Local adjustment unit with LCD display)</td> <td>None</td> </tr> <tr> <td>Digital, custom scale (Local adjustment unit with LCD display)</td> <td>None</td> </tr> <tr> <td>Digital, 0 to 100% (Local adjustment unit with LCD display)</td> <td>Yes</td> </tr> <tr> <td>Digital, custom scale (Local adjustment unit with LCD display)</td> <td>Yes</td> </tr> </tbody> </table>	Indicator	Arrester	None	None	Analog, 0 to 100% linear scale	None	Analog, custom scale	None	None	Yes	Analog, 0 to 100% linear scale	Yes	Analog, custom scale	Yes	Digital, 0 to 100%	None	Digital, custom scale	None	Digital, 0 to 100%	Yes	Digital, custom scale	Yes	Digital, 0 to 100% (Local adjustment unit with LCD display)	None	Digital, custom scale (Local adjustment unit with LCD display)	None	Digital, 0 to 100% (Local adjustment unit with LCD display)	Yes	Digital, custom scale (Local adjustment unit with LCD display)	Yes	Z/S board attached																																
Indicator	Arrester																																																															
None	None																																																															
Analog, 0 to 100% linear scale	None																																																															
Analog, custom scale	None																																																															
None	Yes																																																															
Analog, 0 to 100% linear scale	Yes																																																															
Analog, custom scale	Yes																																																															
Digital, 0 to 100%	None																																																															
Digital, custom scale	None																																																															
Digital, 0 to 100%	Yes																																																															
Digital, custom scale	Yes																																																															
Digital, 0 to 100% (Local adjustment unit with LCD display)	None																																																															
Digital, custom scale (Local adjustment unit with LCD display)	None																																																															
Digital, 0 to 100% (Local adjustment unit with LCD display)	Yes																																																															
Digital, custom scale (Local adjustment unit with LCD display)	Yes																																																															
10	<Approvals for hazardous locations> None (for ordinary locations)																																																															
11	<Capillary and mounting bracket> <table border="1"> <thead> <tr> <th>Capillary</th> <th>Mounting bracket</th> <th>Armor of capillary</th> </tr> </thead> <tbody> <tr> <td>1.5 m</td> <td>304 Stainless steel</td> <td>PVC</td> </tr> <tr> <td>3</td> <td>304 Stainless steel</td> <td>PVC</td> </tr> <tr> <td>5</td> <td>304 Stainless steel</td> <td>PVC</td> </tr> <tr> <td>6</td> <td>304 Stainless steel</td> <td>PVC</td> </tr> <tr> <td>7</td> <td>304 Stainless steel</td> <td>PVC</td> </tr> <tr> <td>8</td> <td>304 Stainless steel</td> <td>PVC</td> </tr> <tr> <td>10</td> <td>304 Stainless steel</td> <td>PVC</td> </tr> <tr> <td>1.5</td> <td>304 Stainless steel</td> <td>Stainless steel</td> </tr> <tr> <td>3</td> <td>304 Stainless steel</td> <td>Stainless steel</td> </tr> <tr> <td>5</td> <td>304 Stainless steel</td> <td>Stainless steel</td> </tr> <tr> <td>6</td> <td>304 Stainless steel</td> <td>Stainless steel</td> </tr> <tr> <td>7</td> <td>304 Stainless steel</td> <td>Stainless steel</td> </tr> <tr> <td>8</td> <td>304 Stainless steel</td> <td>Stainless steel</td> </tr> <tr> <td>10</td> <td>304 Stainless steel</td> <td>Stainless steel</td> </tr> </tbody> </table>	Capillary	Mounting bracket	Armor of capillary	1.5 m	304 Stainless steel	PVC	3	304 Stainless steel	PVC	5	304 Stainless steel	PVC	6	304 Stainless steel	PVC	7	304 Stainless steel	PVC	8	304 Stainless steel	PVC	10	304 Stainless steel	PVC	1.5	304 Stainless steel	Stainless steel	3	304 Stainless steel	Stainless steel	5	304 Stainless steel	Stainless steel	6	304 Stainless steel	Stainless steel	7	304 Stainless steel	Stainless steel	8	304 Stainless steel	Stainless steel	10	304 Stainless steel	Stainless steel	Note 2 Note 2 Note 2																	
Capillary	Mounting bracket	Armor of capillary																																																														
1.5 m	304 Stainless steel	PVC																																																														
3	304 Stainless steel	PVC																																																														
5	304 Stainless steel	PVC																																																														
6	304 Stainless steel	PVC																																																														
7	304 Stainless steel	PVC																																																														
8	304 Stainless steel	PVC																																																														
10	304 Stainless steel	PVC																																																														
1.5	304 Stainless steel	Stainless steel																																																														
3	304 Stainless steel	Stainless steel																																																														
5	304 Stainless steel	Stainless steel																																																														
6	304 Stainless steel	Stainless steel																																																														
7	304 Stainless steel	Stainless steel																																																														
8	304 Stainless steel	Stainless steel																																																														
10	304 Stainless steel	Stainless steel																																																														
12	<Options> <table border="1"> <thead> <tr> <th>Extra SS tag plate</th> <th>Stainless steel elec. housing</th> <th>Coating of cell</th> </tr> </thead> <tbody> <tr> <td>None</td> <td>None</td> <td>None</td> </tr> <tr> <td>Yes</td> <td>None</td> <td>None</td> </tr> <tr> <td>None</td> <td>Yes</td> <td>None</td> </tr> <tr> <td>Yes</td> <td>Yes</td> <td>None</td> </tr> <tr> <td>None</td> <td>None</td> <td>Yes</td> </tr> <tr> <td>Yes</td> <td>None</td> <td>Yes</td> </tr> <tr> <td>None</td> <td>Yes</td> <td>Yes</td> </tr> <tr> <td>Yes</td> <td>Yes</td> <td>Yes</td> </tr> </tbody> </table>	Extra SS tag plate	Stainless steel elec. housing	Coating of cell	None	None	None	Yes	None	None	None	Yes	None	Yes	Yes	None	None	None	Yes	Yes	None	Yes	None	Yes	Yes	Yes	Yes	Yes	Note 3																																			
Extra SS tag plate	Stainless steel elec. housing	Coating of cell																																																														
None	None	None																																																														
Yes	None	None																																																														
None	Yes	None																																																														
Yes	Yes	None																																																														
None	None	Yes																																																														
Yes	None	Yes																																																														
None	Yes	Yes																																																														
Yes	Yes	Yes																																																														

Note 1: (*1) 100: 1 turn down is possible, but should be used at a span greater than 1/40 of the maximum span for better performance.
 Note 2: (*2) Available for 5th digit code "L".
 Note 3: (*3) Customer tag number can be engraved on standard stainless steel name plate. If extra tag plate is required, select "Yes".

Digit	Description	Note	1	2	3	4	5	6	7	8	9	10	11	12	13	14	15	21	← Digit No. of code	
13	<Special applications and fill fluid> Treatment Degreasing		F	K	B	0				4								Y	Y	
21	<Other options> (*4) High accuracy type Low temperature effect type H+J ----- Instruction manual unattached High accuracy type Low temperature effect type T+U	Note 4																		
																				H J K L T U V

Note 4: (*4) In other option is not necessary, 21st digit code is blank.
In case of 21st digit code is blank, instruction manual attached.

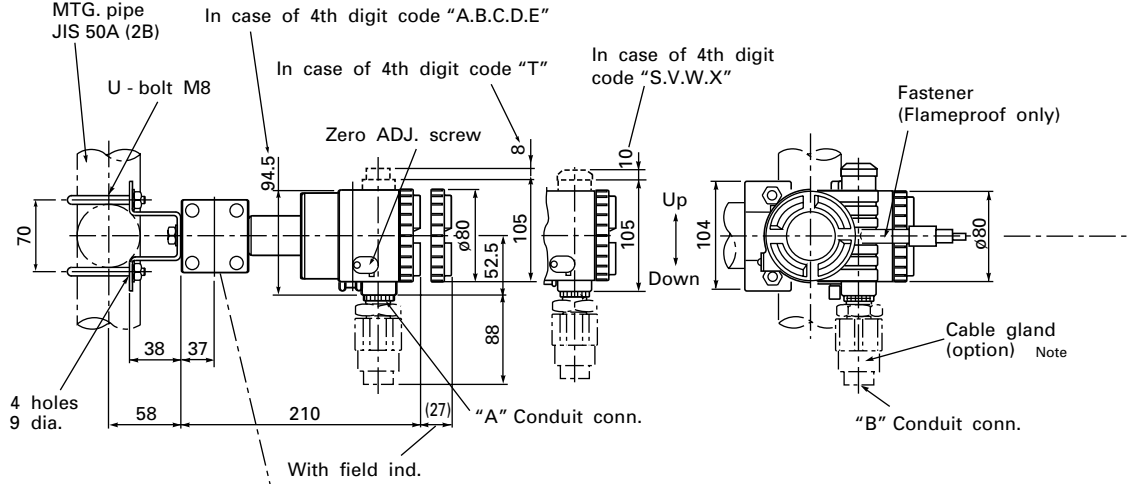
ORDERING INFOMATION

When ordering this instrument, specify.

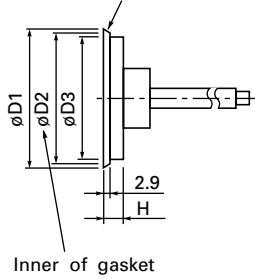
1. CODE SYMBOLS
2. Measuring range.
3. Output orientation (burnout direction) when abnormality is occurred in the transmitter.
Hold / Overscale (21.6mA) / Underscale (3.2mA)
Unless otherwise specified, output hold function is supplied.
4. Indication method (indicated value and unit) in case of the actual scale (code D, H, P, S on 9th digit).
5. Tag No. (up to 26 alphanumerical characters), if required.

OUTLINE DIAGRAM (Unit:mm)

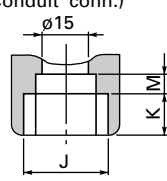
Note) Cable gland is supplied in case of flameproof packing type.
 ø11 cable is suitable.



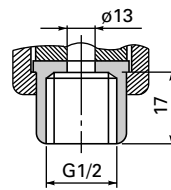
IDF 4B Equivalent



Detail "A" (Conduit conn.)



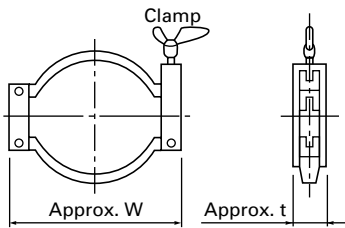
Detail "B"



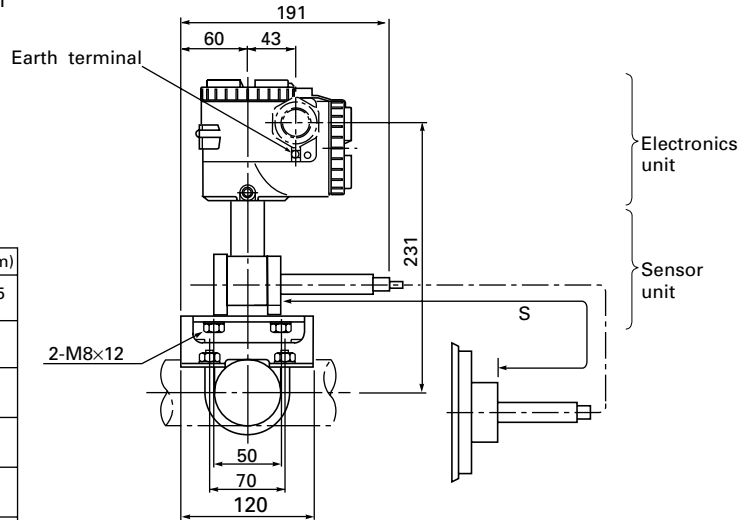
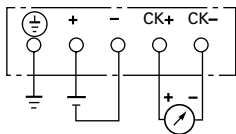
See Table 1

øD1	øD2	øD3	H	W	t	Remarks
119	110	97	18	160	24	IDF 4B Equivalent
64	56.5	49	25	100	15	IDF 2B Equivalent

11th digit code	S (m)
D O	1.5
E R	3
L S	5
F T	6
M V	7
N W	8
P X	10



CONNECTION DIAGRAM



4th digit of the code symbols	Conduit conn.		
	J	K	M
A, S	G1/2	17	8
B, T	1/2-14NPT	16	5
C, V	Pg13.5	8	4.5
D, W	M20x1.5	16	5

⚠ Caution on Safety

*Before using this product, be sure to read its instruction manual in advance.

Fuji Electric Systems Co., Ltd.

Head Office

Gate City Ohsaki, East Tower, 11-2, Osaki 1-chome,
Shinagawa-ku, Tokyo 141-0032, Japan

<http://www.fesys.co.jp/eng>

Instrumentation Div.

International Sales Dept.

No.1, Fuji-machi, Hino-city, Tokyo, 191-8502 Japan

Phone: 81-42-585-6201, 6202 Fax: 81-42-585-6187

<http://www.fic-net.jp/eng>

Information in this catalog is subject to change without notice.

Printed in Japan